



**CONTRACT NO. ZNB00552/00000/00/PMC/INF/21/T: REGRAVELLING OF L1450 (KM 0.000 TO KM 3.351), L675 (KM 0.000 TO KM 2.592) AND P117 (KM 8.000 TO KM 13.900), IN THE RICHMOND LOCAL MUNICIPALITY (KZ227), COST CENTRE PIETERMARITZBURG.**

**BRIEFING NOTES FOR L1450, L675 AND P117**

Pay careful attention to page T4, T1.1 Tender notice and invitation to tender as the most important information is highlighted there. Note that an electronic AND hard copy must be submitted as requested in the tender notice.

Pay special attention to all the pages that contain this heading -

Failure to complete, sign and date this form or failure to acknowledge receipt of each Addendum issued or failure to return with the quotation submission a complete copy of each Addendum issued shall result in the quotation being considered non-responsive in terms of subclause F.3.8 of the Conditions of Tender and such a quotation shall be rejected.

If this heading is displayed and a contractor feels that it is **N/A** and **does not** sign the page, the tender will be **non-responsive**. The content may be marked as **N/A** if so applicable as is generally the case with Page T24 but the **Bidder must still sign and date the required spaces as instructed**. Please note initialling the bottom of the page is not seen as a signature it is simply acknowledging that the bidder has seen the page and is aware of what is in his/her document.

Page T14 must be completed in full. Pay special attention to the highlighted sections-

SUPPLIER COMPLIANCE STATUS	TAX COMPLIANCE SYSTEM PIN:	OR	CENTRAL SUPPLIER DATABASE No:	MAAA
B-BBEE STATUS LEVEL VERIFICATION CERTIFICATE	TICK APPLICABLE BOX) <input type="checkbox"/> Yes <input type="checkbox"/> No	B-BBEE STATUS LEVEL SWORN AFFIDAVIT		TICK APPLICABLE BOX) <input type="checkbox"/> Yes <input type="checkbox"/> No
[A B-BBEE STATUS LEVEL VERIFICATION CERTIFICATE/ SWORN AFFIDAVIT (FOR EMES & QSEs) MUST BE SUBMITTED IN ORDER TO QUALIFY FOR PREFERENCE POINTS FOR B-BBEE]				
ARE YOU THE ACCREDITED REPRESENTATIVE IN SOUTH AFRICA FOR THE GOODS /SERVICES /WORKS OFFERED? [IF YES ENCLOSE PROOF]	<input type="checkbox"/> Yes <input type="checkbox"/> No	ARE YOU A FOREIGN BASED SUPPLIER FOR THE GOODS /SERVICES /WORKS OFFERED?	<input type="checkbox"/> Yes <input type="checkbox"/> No	[IF YES, ANSWER PART B.3]

Are you a foreign based supplier – This answer should generally be **No** and the bottom section( **QUESTIONNAIRE TO BIDDING FOREIGN SUPPLIERS.** ) does not need to be completed as the contractor has already indicated that he is not a foreign based supplier.

T15 must be completed and signed thus accepting the terms for bidding.

**SBD 4 , 8 and 9** are extremely important and failing to **answer all the questions** as required also lead to a bidder’s offer being seen as **non-responsive**. This has occurred on numerous occasions.

SBD 6.1 Note 6.1 must be completed to claim BBBEE Points. It should be completed as follows:  
B-BBEE Status Level of Contributor: *1 (As the BBBEE level the bidder’s certificate or affidavit grants)*  
= *...20 (Correlating points to level – see table 4.1)* (maximum of 20 points)

SBD 6.2 is not applicable to this Contract .

Returnable D – T35 – Generally the simplest and most frequent submission is a Sworn Affidavit. It should be noted that an affidavit must be an original that is certified by a commissioner of oaths. If a copy is submitted the contractor will not be awarded any preferential points and therefore lose out on 20 points. On the Affidavit one question is regarding the financial year for which the affidavit is done. This must be the latest financial year and not older than 12 months from date of closing of the bid, but also this time cannot be in the future, eg. February 2022. All provisions for disclosing information under Oath must be complied with to ensure the affidavit is acceptable. For BBBEE certificate – these must be submitted as a copy – no need of certification.

Returnable E on page T36 must be completed and signed by all members/directors. If one of the members/directors fails to sign it is seen as a **non-responsive** document due to the directors/members not being aware of the tender submission. Also ensure that the specimen signature does appear on the resolution letter of the company owners attached to this returnable.

Returnable G T38 must be completed and have CV's attached as is indicated at the top of the Page. G2 has been redacted and it is not necessary to complete this section.

Returnable J – T44 Must be signed, dated and completed as indicated on the bottom of page T44. Please follow the instructions on page T43 on how to calculate the minimum labour percentage and note that the specified minimum labour percentage is **4.4%** as indicated. While tendering below the minimum is no longer a disqualification criteria, a penalty would apply to the bid if awarded for not achieving the minimum target.

Returnable K – T45 Must be completed correctly and signed. This should be read and completed accordingly. Question 3 has three sub headings. Generally, the contractor will answer yes to only one of these. The corresponding number in question 4 must then also be completed. Example – If 3(a) is answered yes then the contractor must answer 4(a) as well, If 3(b) then 4(b) etc.

**Page C3 as the form of offer must be signed and the amount in words must be completed failure to do this will invalidate the tender.**

Please check that the amount on C3(For of Offer) and C39(BOQ Summary) match.

On a contractual note the following must be mentioned:

The construction period is 5 months and failure to complete the project within the specified timeframe will result in penalties. It is of extreme importance that these risks be factored into the pricing of the documents as the bidders' price is also compared to realistic market value of the works that has been assessed by a third party to guide if the quoted price is reasonable.

## LOCALITY PLAN

Local Road L1450, L675 and Provincial Road P117 are located in KZ227 within DC 22, Locality of the roads is indicated in blue below: -

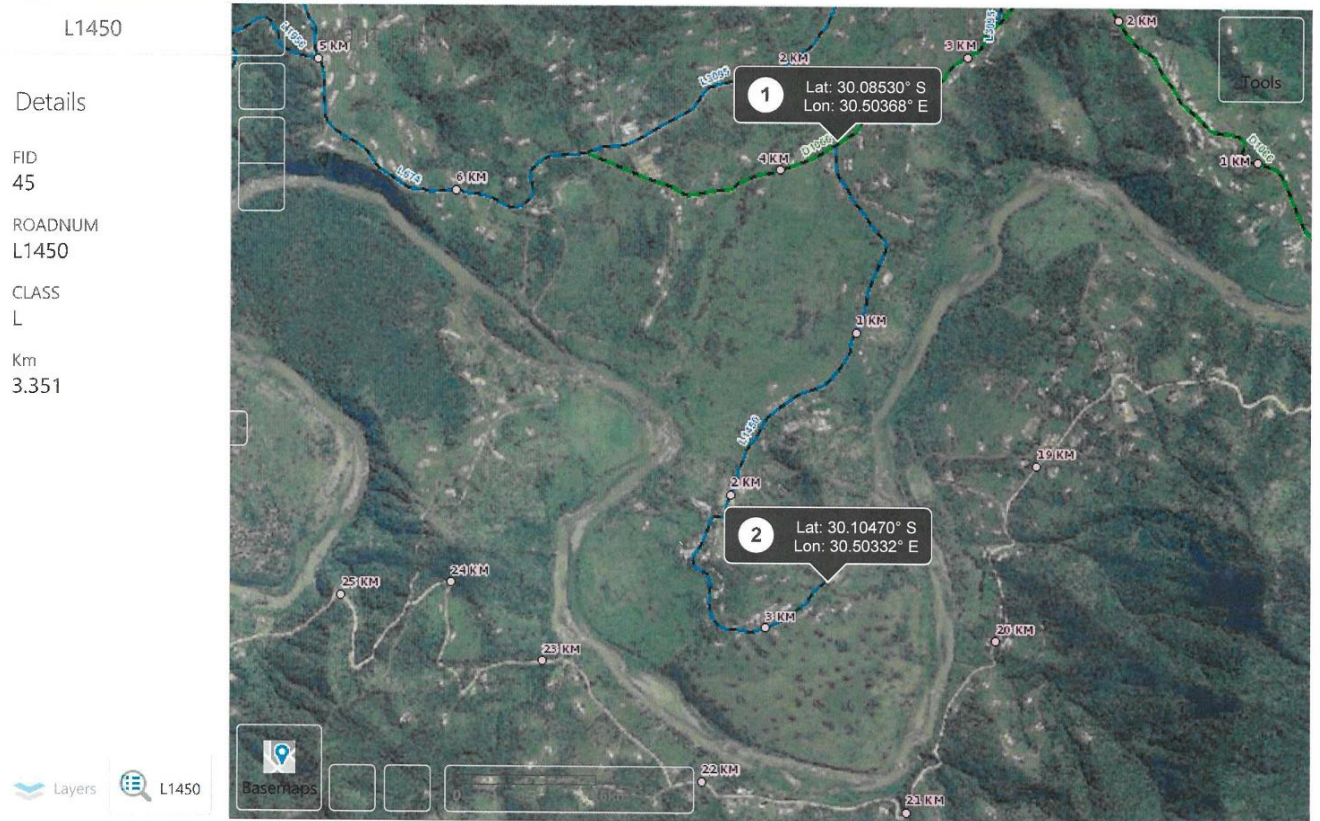
PMB Region Viewer

Page 1 of 1



2016 map data...

[Sign in](#)

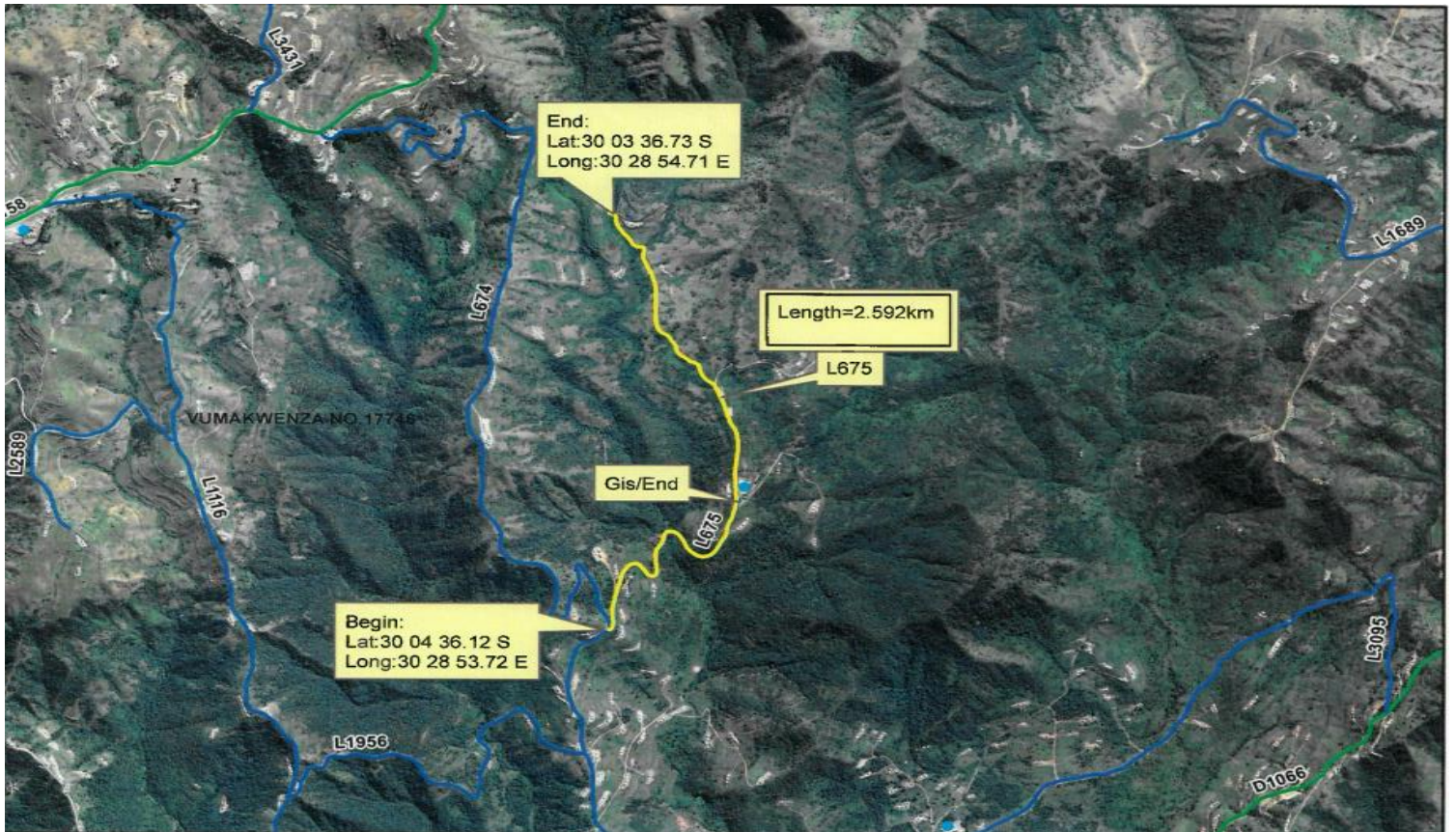


<https://gis1.kzntransport.gov.za/DOTpmb/>

2021-04-23

**Locality Plan of Road L1450**

# Locality Plan of Road L675



P117

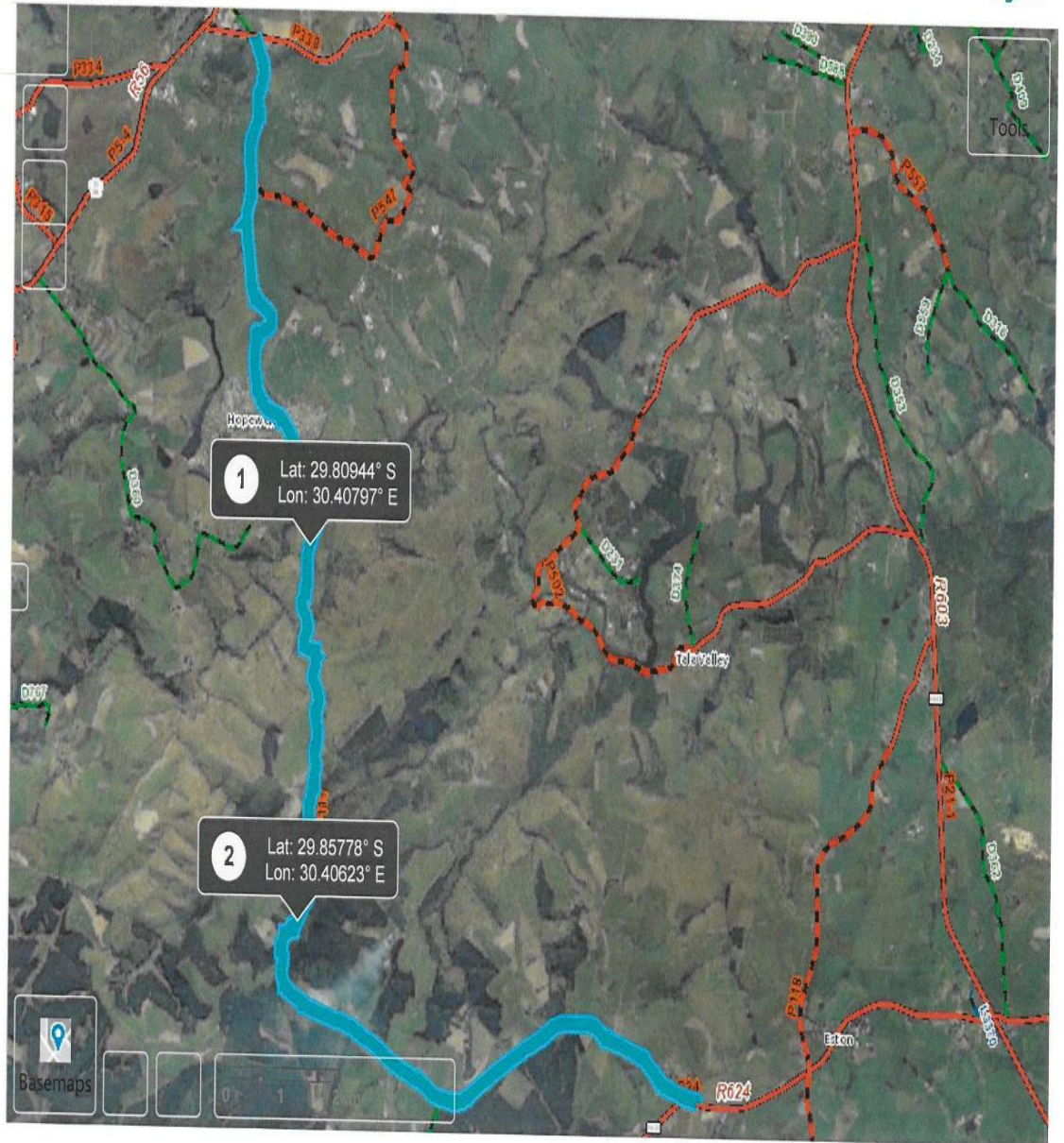
Details

FID  
12

ROADNUM  
P117

CLASS  
P

Km  
23.151



Layers  P117 

Basemaps   

**Locality Plan of Road P117**

The approximate limits of construction can be seen in **Table C4.1**.

**Table C4.1 – Approximate project limit of construction co-ordinates**

<b>Road Name</b>	<b>Km</b>	<b>Latitude</b>	<b>Longitude</b>
<b><u>L1450</u></b>	<b><u>Km 0.000</u></b>	<b><u>30.08530°S</u></b>	<b><u>30.50368°E</u></b>
	<b><u>Km 3.351</u></b>	<b><u>30.10470°S</u></b>	<b><u>30.50332°E</u></b>
<b><u>L675</u></b>	<b><u>Km 0.000</u></b>	<b><u>30°03'36.73''S</u></b>	<b><u>30°28'54.71''E</u></b>
	<b><u>Km 2.592</u></b>	<b><u>30°04'36.12''S</u></b>	<b><u>30°28'53.72''E</u></b>
<b><u>P117</u></b>	<b><u>Km 8.000</u></b>	<b><u>29.80944°S</u></b>	<b><u>30.40797°E</u></b>
	<b><u>Km 13.900</u></b>	<b><u>29.85778°S</u></b>	<b><u>30.40623°E</u></b>

### **PROJECT BACKGROUND**

L1450 and L675 were assessed on the (15/02/2021), and P117 was assessed on the (18/02/2021), and it was determined that the current condition of the roads is such that preventative maintenance is required to prevent further degradation of the surface, and to provide an adequate riding surface for the roads. It is therefore required that the gravel wearing course be reinstated to the minimum required 150mm for both roads.

### **WARD**

L1450 (KM 0.000- KM 3.351) and L675 (KM 0.000- KM 2.592) are located in ward 5, and P117 (KM 8.000- KM 13.900) is located between wards 3 and 4 under the Richmond Local Municipality, in the uMgungundlovu District Municipal.

### **TRIBAL COUNCIL**

- L1450 and L675 are under iNkosi M.P. Mkhize and Cllr. B. Ngcongo
- P117 is under iNkosi M.P. Mkhize and Cllr. R.B. Shange

### **FACILITIES AND SERVICES ALONG THE ROAD.**

There are no known services along the road.

### **TERRAIN**

The gravel roads are on a rolling to steep terrain.

### **CONDITION OF THE CURRANT GRAVEL ON THE ROAD**

The Gravel Wearing course has been worn away by traffic up to 20mm out of the required 150mm for all the roads and the drainage infrastructure – side and mitre drains – have deteriorated and as a result the road has been eroded by the rain in some areas.

### **ROUTE TO THE QUARRY, LOCATION OF QUARRY AND AVERAGE DISTANCE**

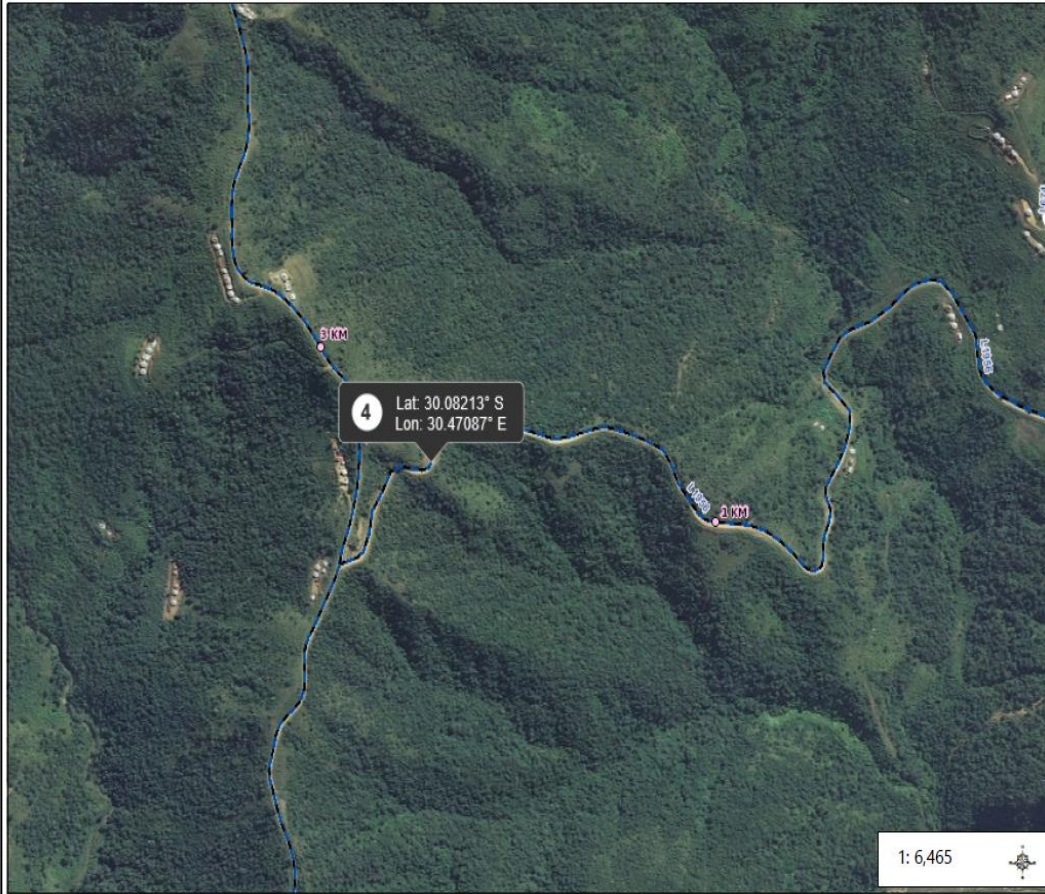
L1450 and L675 will be sourcing material from the same borrow pit due to the close vicinity of the two roads. The borrow pit is located on L1956 KM 0.2 which is approximately 2.5km from L1450 and 2 km from L675. The GPS Co-Ordinates for the Quarry are **30.08213°S; 30.47087°E**.

P117 will be sourcing material from the borrow pit located on P118 KM 2.0 which is approximately 5.8km from the site and the GPS Co-Ordinates for the Quarry are **29.83811°S; 30.51174°E**.

**Please see the photos below for some images of the roads condition and the borrow pit.**

**P117 PHOTOS**





### Legend

- Towns**
  - Capital / City
  - Major
  - Settlement
- DOT Facilities**
  - Area Offices
  - Cost Centre Office
  - DOT\_General
  - Driving License Test Centers
  - ★ RTI Stations
  - Vehicle Testing Centers
  - Weigh Bridges
- **KM Points**
- National\_Road**
  - Blacktop
  - Concrete
- Main**
  - P, Blacktop
  - P, Concrete
  - P, Gravel
- District**
  - D, Blacktop

**Notes**  
 L1956 @KM0.225

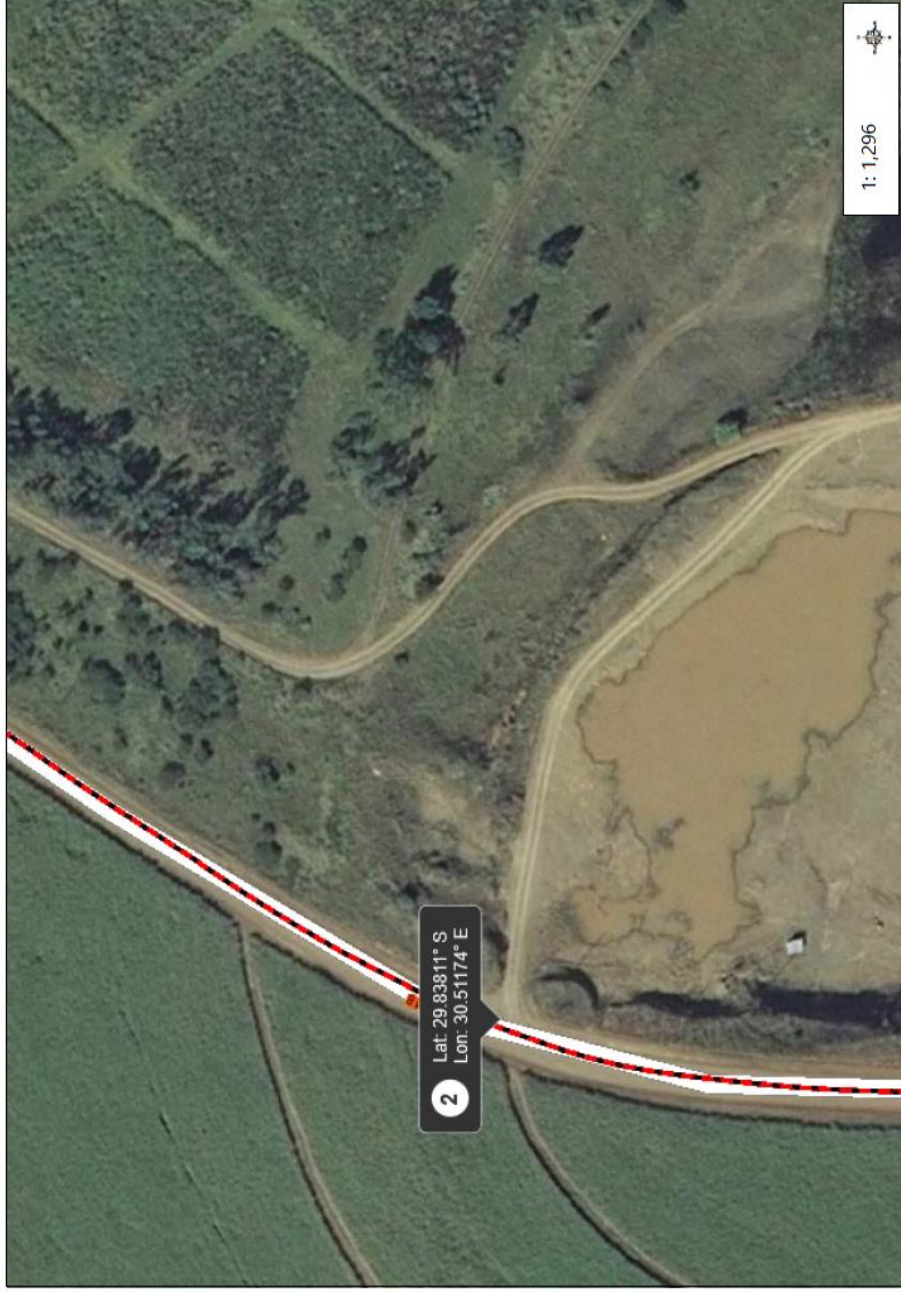


Disclaimer: All the data in this website is published in good faith and for general information purposes only. The KwaZulu Natal: Department of Transport (KZN-DoT) does not make any warranties about the completeness, reliability or accuracy of this information. Any action you take upon the data you find on this website is strictly at your own risk, and KZN-DoT will not be liable for any losses and/or damages in connection with the use of our website. This map is a user generated static output from this website and is not to be used for navigation.





# P118 Borrow pits



1: 1,296

**2** Lat: 29.83811° S  
Lon: 30.51174° E



GCS\_WGS\_1984

## Legend

- TOWNS**
- Capital / City
- Major
- Settlement
- DOT Facilities**
- Area Offices
- Cost Centre Office
- DOT\_General
- Driving License Test Centers
- RTI Stations
- Vehicle Testing Centers
- Weigh Bridges
- KM Points**
- National\_Road
- Blacktop
- Concrete
- Main**
- P. Blacktop
- P. Concrete
- P. Gravel
- District**
- D. Blacktop

## Notes

P118 @KM236

Disclaimer: All the data in this website is published in good faith and for general information purposes only. The KwaZulu-Natal Department of Transport (KZN-DOT) does not make any warranties about the completeness, reliability, or accuracy of this information. Any action you take upon the data you find on this website is strictly at your own risk and KZN-DOT will not be liable for any losses and/or damages in connection with the use of our website. This map is a user generated static output from this website and is not to be used for navigation.